

ALUMINCO

ARCHITECT-
TURAL
SOLU-
TIONS

Safety & Security

Design

**THE EXTRA
MILE FOR
OUR BUSINESS
PARTNERS!**

Energy Efficiency

Comfort

INNOVATION IS AT THE HEART OF EVERYTHING WE DO.

We offer pioneering products and solutions for newbuilds and renovations designed to meet specific user needs in different climate zones. Working with new trends and society challenges are hence the key issues for Aluminco in its corporate strategy and product development.

Energy Efficiency

Savings of energy costs due to efficient insulation

Comfort

Increased Comfort in terms of Thermal and Sound Insulation

Safety & Security

Enhanced system components deliver optimum
Air-Water-Wind performance

Design

The greatest possible degree of natural light penetration





THE BEGINNING OF A GREAT PASSION!

What the design promises is surpassed by the engineering – with a unique symbiosis of functionality, best in class performances and high-quality standards.

This is the new generation of ALUMINCO systems.

Experience the best from the world of the architectural aluminium systems.

The
SLIDERS
Collection


SL200

SL230

SL2700

SL2900

Top performing sliding & folding door systems with innovative and unique features, shaping elegant constructions and fulfilling largescale requirements.



SL320

SL250

SL2450

FD460

FD4600

SL2900

OUR NEXT GREAT
GENERATION OF SLIDING
SYSTEMS – AHEAD OF ITS TIME



The art of minimal architectural design with first in class performance in terms of thermal insulation, air-and water-tightness, and the value-added SOFT CLOSE function, are some of the reference points that dominate and make the SL2900 unique.

This top-ranked system belongs to the new generation of architectural Aluminco systems, which are based on modern architectural trends, incorporating cutting-edge technology whilst offering unrivaled functionality, with unprecedented for its time performances.



CUTTING EDGE TECHNOLOGY

Its unrivalled mechanisms, the integrated system of water drainage and the various versions of perimetric locking make SL2900 exceed the boundaries of an aluminium system perfectly expressing the art of well-being.



Complete solution of water drainage



SOFT CLOSE function



Diversion mechanism



Pioneering design grants freedom



SL2450

LIFT & SLIDE THERMAL
INSULATING SYSTEM
WITH MINIMAL FACE WIDTHS



The SL2450 represents the new evolution of ALUMINCO's advanced systems, offering unlimited enhanced features and unrivaled characteristics. It harmoniously combines all the functional benefits of a minimal lift and slide system and at the same time offers impressive thermal insulation, water tightness and resistance to wind pressure.





SLIDING SENSE OF FREEDOM DOORS

The system combines up to date architectural aesthetics and exceptional functionality along with top durability and performance. The architectural aesthetics are depicted on the 30 mm interlocking face width which permits greater visibility and flow of light, while the low threshold offers extra comfort and easier access.



FD4600

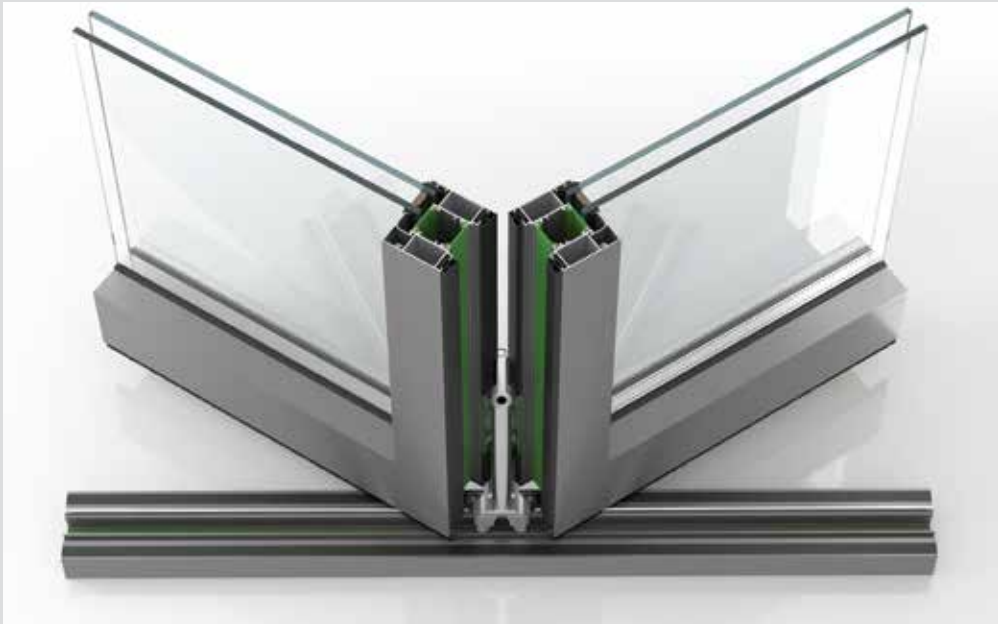
INNOVATIVE CONCEPT WITH ENHANCED FEATURES

FD4600 is a top class insulating system for folding doors, offering extremely high performance and impressive, out of competition, properties. The desire to create living spaces filled with daylight was never so feasible. This high performance system offers this advantage, as well as a minimal design, high insulation and functionality with hardware that have specifically been designed for folding systems.





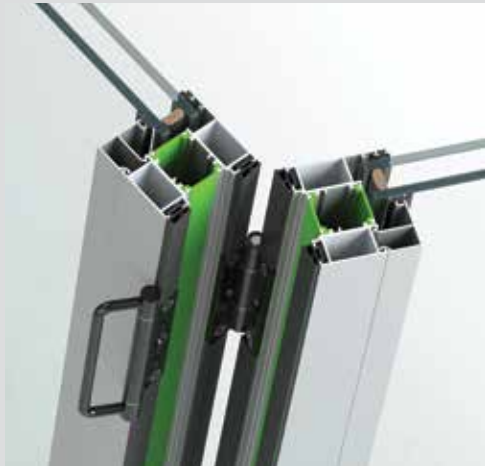
From new construction to remodeling, Folding Door Systems combine ease of operation, aesthetics and optimal thermal performance.



Low sight lines. Visible aluminium sash to sash 124 mm



Bottom-slide operation



Special hinge with integrated built-in handle for easy locking



Possibility of open corners without any post

SLIDING WINDOW & DOOR SYSTEMS PERFORMANCE MATRIX



SL2900

Sliding Thermal Insulating System for Hyper Performances

Fully intergrated threshold solution



SL2700

Lift & Sliding Thermal Insulating System for enhanced transparency of wide spans



SL2450

Sliding Thermal Insulating System with Minimal Face Widths

SYSTEMS	POLYAMIDES mm		GLASS THICKNESS mm	FRAME LIFT & SLIDE WIDTH mm	MIN. FRAME HEIGHT mm	MIN. FACE HEIGHT mm	SASH WIDTH mm	SASH HEIGHT mm	MAX. SASH WEIGHT Kg
	GUIDE	SASH							
SL200	12-20-24	18.6-24	up to 25	90	32	110	330-1800	510-2400	160
SL2450	16-24	24-32	27	113	35	112.1	330-2000	1200-2700	200
SL250	16-24	16	22-47	151.2	53	144.4	720-3350	1190-2690	300-400
SL2900	24	24	44-74	170	86	54	680-2500	1200-2500	250
SL2700	30	30	26-51	174	25	79	800-3000	1200-3000	400
FD4600	20-30		27-57	73	24	127.1	450-1200	600-3000	120



FD4600

Folding Thermal Insulating
Door System for High Comfort
High performance threshold



FD4600

Folding Thermal
Insulating Door System
for High Comfort
Low threshold



FD4600

Folding Thermal
Insulating Door System
for High Comfort
Easy access threshold

AIR PERMEABILITY EN 12207	WATER TIGHTNESS EN 12208	WIND LOAD EN 12210	OPERATING FORCES EN 13115	SOUND REDUCTION R_w EN 717	THERMAL INSULATION U_f EN 10077-2	SYSTEMS
Class 3	Class 3A	Class C3/B3		26 dB	2.1-5.1 W/m ² K	SL200
Class 4	Class 3A	Class C4/B4	Class 1	40 dB	1.9-5.3 W/m ² K	SL2450
Class 3	Class 3A	Class C4			3.0-5.5 W/m ² K	SL250
Class 2	Class 2A	Class C3/B3	Class 1		2.0-4.5 W/m ² K	SL2900
					from 2.7 W/m ² K	SL2700
Class 3	Class 2A	Class C3/B4			2.1-3.1 W/m ² K	FD4600



The
WINDOWS
Collection

W450

W450HS

**W540****W4750****W4900**

Contemporary systems offer hundreds of configurations, with inward-opening, outward opening, side-hung, top-hung, tilt-turn or fixed light, combining outstanding performance with adaptation properties and exceptional design.



W450/W450HS

THERMALLY
INSULATED TILT &
TURN SYSTEM WITH
AN EXCEPTIONAL
AESTHETIC RESULT

The W450 system belongs to the thermal insulation systems generation and has been designed with attention to detail in order to meet contemporary architectural needs for energy efficiency and safety. This line's wide range of profiles offer numerous innovative solutions, from flat to curved sections, as well as the ability to apply complex typologies such as "aller-retour" doors, rotating windows and opening frames with hidden sash in order to achieve a high-level aesthetics.





W4750

TILT & TURN THERMAL
INSULATING SYSTEM FOR THE
MOST DEMANDING THERMAL
INSULATION REQUIREMENTS.



The ALUMINCO W4750 is a new advanced aluminium system that combines the proven benefits of hinged windows and doors – elegant design and maximum safety - with the highest thermal insulation requirements. Three incomparable advantages, the use of 39 mm reinforced polyamides, the EPDM central gasket and the advanced perimeter locking mechanism, all in one system offer an outstanding Thermal Insulation Index $U_f \geq 1.2 \text{ W/m}^2\text{K}$. It constitutes an ideal solution for high-end residential and commercial projects that require high energy efficient performance with a high degree of design along with top functionality.



W4900



TILT & TURN THERMAL
INSULATING SYSTEM
INNOVATIVE CONCEPT WITH A
PASSIVE HOUSE CERTIFICATION



The ALUMINCO W4900 aluminium window system has been certified by the Passive House Institute (PHI) in order to meet the high requirements of passive houses.

It incorporates all the well-known benefits of aluminium windows such as stability and high structural requirements with a superior level of thermal insulation value of $U_w=0.78 \text{ W/m}^2\text{K}$ and the greatest possible degree of architectural design freedom.




**The
ENTRANCE
DOORS
Collection**

D75

D90

**D110
PIVOT**



Combining innovative technologies with exceptional design, Entrance Doors constitute the perfect entry into a home or commercial property. The ALUMINCO Collection offers a choice of entrance doors that are as decorative as they are weather-tight and as thermally efficient as they are secure

HINGED WINDOW & DOOR SYSTEMS PERFORMANCE MATRIX



W450

Tilt & Turn Thermal Insulating System



W4750

Advanced Hinged System with Top Performances



W4900

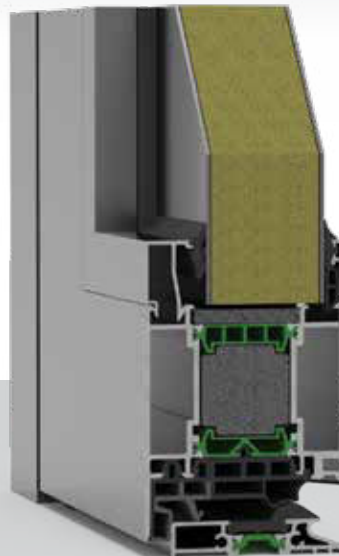
Passive House-Certified Superior Hinged System

SYSTEM	POLYAMIDES mm	GLASS THICKNESS mm	FRAME DEPTH mm	MIN. FACE HEIGHT mm	MAX. SASH WEIGHT Kg	SASH WIDTH mm	SASH HEIGHT mm
W450	24	15-51	59.5	102	130	360-1490	450-2360
W450 HS	30	27	76.6	72	130	360-1490	450-2360
W4750	39	21-66	74.5	102	130	360-1490	450-2360
W4900	54	48-80	89.5	102	130	360-1490	450-2360
D110	32	-	113	-	250	1000-2000	2100-3000
D90	18	60-67	89.5	170.2	200	1400	3000
D75	39	44-52	74.5	170.2	200	1400	3000



D90

High-Performance
Entrance Door
System



D75

High-Performance
Entrance Door
System

AIR PERMEABILITY EN 12207	WATER TIGHTNESS EN 12208	RESISTANCE TO WIND LOAD EN 12210	SOUND REDUCTION R_w EN 717	THERMAL INSULATION U_f EN 10077-2	SYSTEM
Class 4	Class 8A	Class C5/B5	43 dB	2.2-2.6 W/m ² K	W450
Class 4	Class 7A	Class B4		1.6-2.8 W/m ² K	W450 HS
Class 4	Class 3A	Class C2/B2		1.2-2.3 W/m ² K	W4750
				0.76 W/m ² K	W4900
				2.2-2.8 W/m ² K	D110
				1.6-1.8 W/m ² K	D90
			44 dB	1.5-1.7 W/m ² K	D75

An aluminium system is great in the details



Lift & Slide



Window Handle

When you're improving your home, you need to look at the details: those things that you sometimes take for granted, but which often make the difference between a good choice and the best choice.

Make a design statement with ALUMINCO handles.

The handle of a window or a door makes its own contribution, adding its own elegance and class. Designed especially for ALUMINCO, our handles look and feel beautiful, function supremely and engineered to last.



Lift & Slide



Door Handle

Ensure that everything matches perfectly with ALUMINCO colors and finishes

We offer a comprehensive range of colors and finishes, producing the perfect solution to meet your needs, for both residential and commercial applications. Apart from the aesthetics, colors and finishes contribute to the well-being of the systems and quite naturally add value to a property.



**The
FAÇADES
Collection**

EW50

EW50SP






Façade systems are well equipped to meet the construction's requirements enhancing the building's exterior

**The
SHADING
Collection**

SH700

SH750

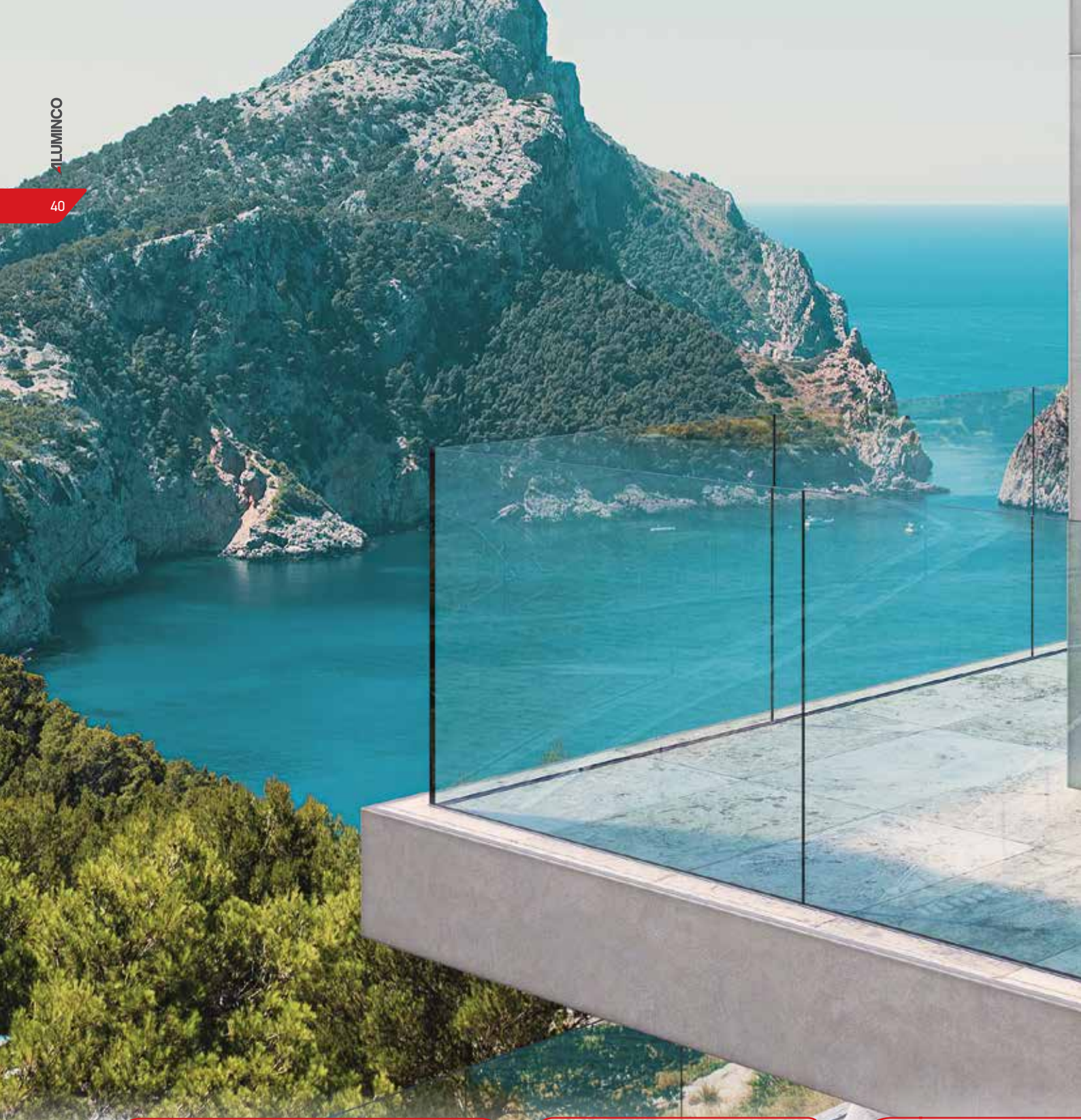


SH3200

SH3300

SH3400

Effective solar shading systems offering high-quality solutions and a wide range of design and function options.



Railing Systems

Open air
by ALUMINCO

Crystaline[®]
railing system



**FUSION
LINE**

CLASSIC
LINE 

F50

Numerous, cutting-edge series able to adapt and deliver the perfect solution for every possible interior or exterior space, from private residences to commercial properties.



Crystalline[®]
railing system

Top transparency
which surpasses
human expectations



Modern people's need for more transparency, brightness and aesthetics are best met by ALUMINCO's proposal in the glass railing category. Crystal Line stands out for its unique design, functionality and safety, offering innovations that have been designed to meet current real-world needs. It is available in 3 basic types, floor and side to floor or parapet, with numerous personalized options.

SYSTEM	MOUNTING			GLASS THICKNESS ¹	LOAD RESISTANCE
	Top Mount	Side Mount	In-Floor		
A LINE	■			17.52 mm	≤ 1 kN/m
A10 LINE	■			10.76 mm	≤ 0.5 kN/m
A20 LINE	■			17.52 mm	≤ 0.5 kN/m
A20U LINE			■	17.52 mm	≤ 0.5 kN/m
B LINE	■			17.52 / 21.52 mm	≤ 1 kN/m
C2 LINE	■			17.52 / 21.52 mm	≤ 1 kN/m
C2U LINE			■	17.52 / 21.52 mm	≤ 1 kN/m
D LINE		■		17.52 / 21.52 mm	≤ 1 kN/m
DS LINE		■		17.52 / 21.52 mm	≤ 1 kN/m
DC LINE		■		17.52 / 21.52 mm	≤ 0.5 kN/m
DC LINE NO DRILL		■		17.52 / 21.52 mm	≤ 0.5 kN/m
E LINE	■			17.52 - 25.52 mm	≤ 3 kN/m
L LINE	■	■		17.52 - 21.52 mm	≥ 3 kN/m
SLIM LINE	■			11.52 - 17.52 mm	≥ 1.5 kN/m

1. GLASS: Laminated Tempered Glass





DOMAIN OF APPLICATION²

TESTED & APPROVED BY

Private

Commercial

Public

IFT
Rosenheim

BBRI

FTL

Instituto
Giordano

Intertek

■	■		■				■	
■			■					
■				■				
■	■			■			■	
■	■			■		■	■	
■	■						■	
■	■							
■		■						
■	■			■		■		
■	■	■		■	■	■		
■	■	■			■			■
■	■			■				

2. PRIVATE: Spaces such as Houses, Residences, Villas
 COMMERCIAL: Spaces such as Offices, Shops, Retails
 PUBLIC: Spaces such as Shopping Malls, Stadiums, Airports



Open air

by ALUMINCO

Combining innovative technology with remarkable design, the Open Air System is the ultimate solution for stylish outdoor spaces such as restaurants, cafes, roof gardens, hotels etc.

A unique innovation, patented* and available exclusively from Aluminco, where the movable part of the system rises or lowers with a single light pressure, effortlessly, according to our needs and depending on the weather conditions.

Beyond that, what makes the Open Air System truly irresistible is its minimalistic design and superior quality. Simple and modern at the same time, it provides endless construction perspectives to the most challenging structural design.

* Hellenic patent number: 1008916
Registered to European patent: 3359757

ELEGANT
INNOVATIVE
UNIQUE

OpenairTM

Open air
PLUS

Open air
ULTRA+

Open air E-MOTION

Open Air E-MOTION is the electrical version of the Open Air system, that cleverly decorates outdoor living spaces, operating with a unique and controllable mechanical system. Open Air E-MOTION can fit and adapt to every environment, impresses with its dimensions and offers an enjoyable experience.





Outdoor Living Systems

PERGOLAS

CANOPIES



GATES

FENCES

LIGHTING

Meet the highest demands of the contemporary architectural trends in modern living outdoor spaces.

We are capable of almost everything!

We place great emphasis on the improvement and expansion of our production capacity. Aluminco's facilities include:

2 aluminium extrusion lines, 1.850 MT and 2.500 MT, with a capacity of 30.000 tns

1 sublimation line for wood imitation and special effect colors

2 thermal break assembly lines

5 powder coating lines, 1 vertical and 4 horizontals

1 Automatic anodizing unit offers profile length up to 7.5 m.

2 Robotic warehouses with a storage capacity of 1.700 spots managed by a modern Warehouse Management System

Distribution
Facilities

2 automated
packaging
lines

Multiple
CNC lines,
bending
machines,
cutting saws,
drilling
machines

1 Smelting
Center

4 Door
Panel lines

4 Fabrication
Units

1 Testing
Center

High-level industrial capacity & logistics services across one production site!

We control the whole process from extrusion to distribution providing confidence to our business partners through a secure and efficient supply chain.

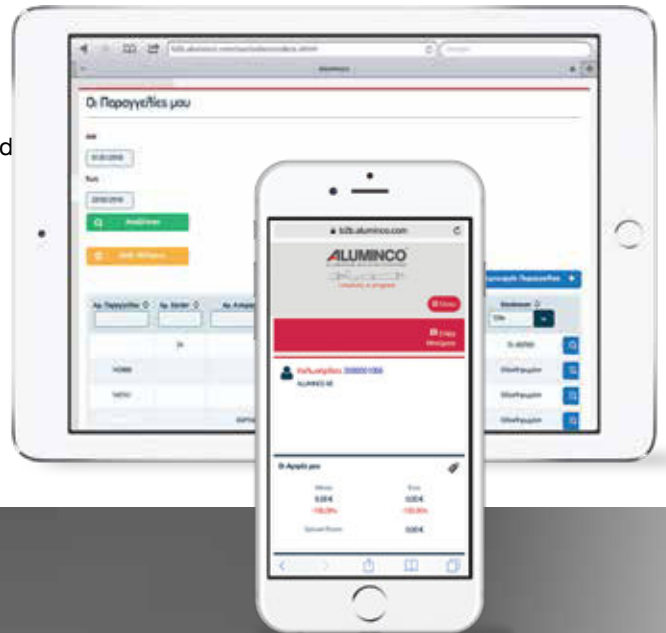
COMPREHENSIVE SERVICES & TOOLS

We provide a holistic support for architects, fabricators, investors and private clients, through cross-media services & tools that generate added value. A large range of tools and services is at our partner's disposal.

- Engineering service for major projects
- Specification Product Data Sheets
- Performance tests in our Testing Center
- Drawings in AutoCAD and BIM files
- Digital 3D printing and modeling

MyAluminco B2B Platform, online ordering-configurator-costing-bidding, Uw application for certified thermal calculation, Integrated FP PRO software "All in one" and computational tools, Corporate website: www.aluminco.com

- Technical documentation
- Training seminars and technical workshops
- Demo assembly videos on YouTube
- Electronic periodic newsletters
- Product and corporate brochures
- Aluminco Selections Work Book





ADVANCED TESTING & OPTIMISING CENTER

As part of the development process, our products undergo numerous tests that allow them to meet the most stringent international standards and even regularly exceed them.

We use this expertise to test the performance level of our systems in our own in-house labs and support our partners with project-specific testing.

The ALUMINCO Testing Center is accredited and certified by the German Testing Institute IFT Rosenheim, providing reliable and secure results, based on globally recognised standards.

- EN 1026 Air permeability
- EN 1027 Watertightness
- EN 12211 Resistance to wind load
- EN 12046-1 Operating forces





ALUMINCO[®]
ALUMINIUM BUILDING SYSTEMS

ALUMINCO S.A.
Headquarters & Showroom
Inofita, Viotia GR-32011 - Greece
T. +30 22620 47000 | F. +30 22620 47060
www.aluminco.com | info@aluminco.com